

# Clinical practice guideline. Integral Care Guidelines for the prevention, early detection and treatment of pregnancy, childbirth and puerperium complications: Section on toxoplasmosis in pregnancy

Jorge Alberto Cortes<sup>a, \*</sup>, Jorge Enrique Gómez<sup>b</sup>, Pedro Ignacio Silva<sup>c</sup>, Leonardo Arévalo<sup>d</sup>, Ingrid Arevalo Rodriguez<sup>e</sup>, Martha Isabel Álvarez<sup>f</sup>, Sandra Beltran<sup>g</sup>, Ivohne Fernanda Corrales<sup>h</sup>, Edith Angel Muller<sup>i</sup>, German Ruiz<sup>j</sup>, Pio Ivan Gómez<sup>k</sup>, representing the Group that developed the Integral care pregnancy, childbirth and puerperium guidelines (CDG in Spanish)

## Abstract

*Toxoplasma* infection, an aspect included in the Integral Care Guidelines for prevention, early detection and treatment of complications during pregnancy developed and sponsored by the Department of Science, Technology and Innovation, Colciencias and the Ministry of Health and Social Protection; was selected to develop recommendations that may contribute to its prevention diagnostic and treatment. Guidelines were developed through systematic review of literature, two panels of evaluation, gradation of evidence: SIGN (Scottish Intercollegiate Guidelines Network), discussion panel with users and patients, external evaluation and socioe-conomical evaluation of the impact of recommendations. The *Toxoplasma gondii* infection that occurs during pregnancy may cause serious complications for the fetus and important sequelae for the newborn. A clinical guideline based on the best available scientific evidence, with emphasis on Colombian references, was performed. Experts in parasitology, neonatology and infectious diseases (adult and pediatric) developed the recommendations. It is suggested that the recommendations included in this guideline be followed by healthcare professionals in pregnancy care programs nationwide, with the purpose of lowering the morbidity and mortality related to this disease. Specific recommendations for diagnosis during the first trimester of the pregnancy, recommendations for prevention in non-infected women, identification of fetal or newborn infection and recommendations for treatment in those given cases are included.

## Guía de atención integral para la prevención, detección temprana y tratamiento de las complicaciones del embarazo: Sección de Toxoplasmosis

## Resumen

Como parte de la Guía de atención integral para la prevención, detección temprana y tratamiento de las complicaciones del embarazo, desarrollada y financiada por el Departamento de Ciencia, Tecnología e Innovación, Colciencias, y el Ministerio de Salud y Protección Social de Colombia, se seleccionó a la infección por *Toxoplasma* para el desarrollo de recomendaciones para su prevención, diagnóstico y tratamiento. La infección por *Toxoplasma gondii* (*T. gondii*) durante el embarazo puede resultar en graves complicaciones para el feto y dejar importantes secuelas al recién nacido. Se realizó una guía basada en la mejor evidencia disponible en

*This guide and its sections are part of a group of 25 Integral evidence-based integral care guidelines that include economic aspects and their implementation within the context of the Colombian General Health Social Security System, that were developed by the Ministry of Health and Social Protection and the Department of Science, Technology and Innovation, Colciencias, so as to cover critical and high prevalence issues in the country. The guideline was developed through contract awarded to the National University of Colombia in 2010.*

- a Leader of the Toxoplasmosis Section in Pregnancy, Department of Internal Medicine and Research Group on Infectious Diseases, National University of Colombia, Bogotá, Colombia
- b GEPAMOL Group, Center for Biomedical Research, University of Quindío, Quindío, Colombia
- c Department of Gynecology, University of Santander, Santander, Colombia
- d Master in Sexual and Reproductive Health, El Bosque University, Bogotá, Colombia
- e General Coordinator in Clinical Epidemiology, Integral Care Guidelines for Pregnancy, Childbirth and Puerperium, National University of Colombia, Bogotá, Colombia
- f Pediatric Infectology Service, Fundación Cardioinfantil, Bogotá, Colombia
- g Department of Pediatric Infectology, Sanitas International Organization; Colombian Association of Infectology, Bogotá, Colombia

h Fundación Cardioinfantil, Bogotá, Colombia

i Department of Gynecology and Obstetrics, National University of Colombia, Bogotá, Colombia J Maternity-Fetal Unit, Colombia University Clinic, Bogotá, Colombia

k Professor and director of the Integral Care Guideline for Pregnancy, Childbirth and Puerperium; Leader of Research Group in Sexual and Reproductive Health, Faculty of Medicine, National University of Colombia, Bogotá, Colombia

\* Autor for correspondence  
Universidad Nacional de Colombia. Edificio Facultad de Medicina. Departamento de Medicina Interna, Oficina 510. Bogotá. Colombia. Tel. 31605000, ext. 15011. Fax: 3165000, ext. 15012.  
Correo electrónico: email: jacortesl@unaLedu.co (J.A. Cortes)

Recibido: 5/02/2017; Aceptado: 5/02/2017

Cómo citar este artículo:

la literatura científica, con especial pertinencia a la información colombiana. Un consenso de expertos en parasitología, ginecología, neonatología e infectología, tanto de adultos como pediátrica, desarrolló las recomendaciones. Se propone que las recomendaciones de esta guía de atención integral sean utilizadas por los profesionales de salud de los programas de atención del embarazo del país con el fin de disminuir la morbilidad y mortalidad atribuible a esta enfermedad. Se formulan recomendaciones específicas para el diagnóstico desde el primer trimestre, consejos de prevención en las mujeres no infectadas, identificación de la infección del feto o del recién nacido y recomendaciones de tratamiento en estos escenarios.

## Introduction

Since 2010, the Ministry of Health and Social Protection and Colciencias in Colombia, alongside with a group of experts have been drafting evidence based clinical practice guidelines for critical health issues for the Colombian population. One of the evidence based integrated guidelines (GAI in Spanish) drafted in 2011, were the Integrated Care Guidelines for the Prevention, Early Detection and Treatment during Pregnancy, Childbirth and Puerperium complications. These guidelines, included a section dedicated to recommendations for pregnancy related infections, specially toxoplasmosis.

Toxoplasmosis, may lead to severe neurological impairment, and compromise the visual health of the infant and (in most cases) is caused by a primary infection in an immunocompetent pregnant woman. There are several programs worldwide focused in detection during pregnancy<sup>2-4</sup>. For more than a decade there was a debate over the efficacy of prenatal treatment; however recent publications that include a systematic review comparing cohorts in Europe, North America and South America<sup>6</sup>, as well other observational studies<sup>8</sup>, indicate there is a benefit in prenatal treatment to prevent serious conditions in the infant. On the other hand, findings indicate that in South America, the infection is more severe than in Europe or North America, not only because of the higher frequency of cases but because there are more severe clinical presentations and a higher mortality rate<sup>6,7</sup>, given the higher virulence of the strains found in this geographical area<sup>8-11</sup>.

In Colombia, more than half of pregnant women (50-60%) have *anti-Toxoplasma* antibodies, suggesting there is a high exposition and circulation of the parasite in the country<sup>12,11</sup>. It is expected that between 0.6 to 3% of women acquire the infection during pregnancy. The risk is higher for adolescents, with a risk for seroconversion of 1.5% and lower for pregnant women 35 or older, with seroconversion risk of 0.7%<sup>1</sup>. There is information, about the differences in the frequencies of congenital infection in Colombia. For example, Florencia (Caquetá) and Armenia (Quindío) have the highest percentages (3 and 6/1.000 born alive, respectively); whilst Cucuta and Riohacha had the lowest percentages (0.5 and 0.7/1.000 born alive respectively). For the first time an epidemiological study on congenital toxoplasmosis, could indicate the relationship between high and low frequency of congenital toxoplasmosis risk markers and high or low rainfall levels in each city<sup>14</sup>.

The recommendations contained in this section of the Integral Care Guidelines (ICG) for Pregnancy, Childbirth, and Puerperium are addressed to clinical care personnel who provide care to women in the prevention, early detection, and care of toxoplasmosis in pregnancy, childbirth, or puer-

perium across the different levels of health care (family doctors, general practitioners, rural physicians, specialists in Obstetrics and Gynecology, Internal Medicine, Infectious Diseases, Pediatrics, Neonatology, Nursing professionals and other health professionals). It also targets, indirectly, administrative decision makers, both in hospital related contexts and insurers, health care payers and health policies makers. We included information for 9 clinical questions related to the infection management during pregnancy:

1. What are the risk factors for transmission of toxoplasmosis during pregnancy?
2. What are the recommendations for the primary prevention of *Toxoplasma* infection during pregnancy?
3. What is the recommended follow-up of a seronegative pregnant woman? How should it be monitored?
4. Which *Toxoplasma* antibody test should be ordered first?
5. What are the recommended confirmatory tests for toxoplasmosis?
6. Is ultrasound recommended to determine the severity of fetal involvement in a fetus with positive tests for *Toxoplasma* infection?
7. What is the secondary prevention scheme (prevention of fetal transmission) recommended for women diagnosed with a pregnancy acquired infection?
8. What are the recommended tests for establishing the diagnosis of congenital infection in the newborn?
9. What is the recommended therapy for newborns diagnosed with congenital infection?

During the outlining of this clinical practice guideline, the group that developed the guidelines (CDG) for the ICG for prevention, early detection, and treatment of complications during pregnancy, childbirth or puerperium followed the criteria contained in the methodological guidelines for the elaboration of ICG that are a part of the General System of Social Security in Colombian Health and were developed by the Ministry of Health and Social Protection along with Colciencias, the Center for Studies and Research in Health of the Fundación Santa Fe de Bogotá and Harvard Public Health School. University<sup>15</sup>. The information generated during the different stages of the process was published in the web pages of the Ministry of Health and Social Protection, as well as in the GDG webpage:

[http://gpc.minsalud.gov.co/gpc\\_sites/Repositorio/Conv\\_500/GPC\\_embarazo/gpc\\_embarazo.aspx](http://gpc.minsalud.gov.co/gpc_sites/Repositorio/Conv_500/GPC_embarazo/gpc_embarazo.aspx).

The guidelines were developed through systematic review of literature, two panels of evaluation, gradation of evidence by using SIGN classification (Scottish Intercollegiate Guidelines Network), discussion panel with users, patients, external evaluation and socioeconomical evaluation<sup>15</sup>.

## Clinical questions and recommendations included in the section

### What are the risk factors for the transmission of toxoplasmosis during pregnancy?

Toxoplasmosis is a highly preventable disease and studies on risk factors for infection during pregnancy have been able to identify variables associated with its acquisition. However, the epidemiology of toxoplasmosis varies from country to country. Being aware of risk factors may suggest recommendations for prevention and education programs.

### Summary and description of the body of evidence

#### Socio-demographic risk factors

**Age:** There is evidence that the prevalence of toxoplasmosis increases with age. In Colombia, the National Health Study of 1980 found that the prevalence increased from 32% in <10 years to 65% in people aged 60 years or over 13. A study in Taiwan found a significant difference in antibodies against *T. gondii* among adults (28.3%) and children (18.7%), with a higher frequency of seropositivity (38.1%) in the 50-59 age group, and the lowest frequency (7.7%) in the 1-9 age group<sup>16</sup>. The increase in seroprevalence with age is a predictable result due to the increasing duration of exposure to *T. gondii*.

**Gender:** no evidence has been found about significant differences in the prevalence of antibodies against *T. gondii* between men and women. It is worth stating that the increase in the risk of seropositivity in men found in a 134-person's prevalence study was explained by the authors as caused by carelessness at the time of cleaning and food preparation<sup>17</sup>.

**Race:** there is evidence from European studies that have found differences in the prevalence of *T. gondii* amongst native and immigrant populations; However, this difference can be explained by geographic and epidemiological factors of infection acquisition rather than by ethnic or genetic factors of the host<sup>18</sup>. In a study conducted in Norway, foreign women had a higher incidence of toxoplasmosis than native women (0.60 and 22.6%, respectively). On the other hand, in France, such prevalence was higher among native women of France in comparison with immigrant women<sup>18</sup>.

**Area of residence:** the incidence of toxoplasmosis differs even within the same country. Annual mean rainfall is a factor that has recently been associated with these differences. In the 1988 National Health Study in Colombia, the highest prevalence was found in the Atlantic coast region (63%), while the lowest was found in the Central region (36%)<sup>13</sup>. This same heterogeneity was identified in the first multicentric Colombian study for neonatal toxoplasmosis<sup>19</sup>, which found 3 different prevalence levels in the country: low prevalence (Riohacha and Cucuta), intermediate (Bogota, Barranquilla and Bucaramanga) and high prevalence cities (Armenia and Florencia). Differences in prevalence were associated with

average rainfall levels (intensity), but not with temperature or height above sea level. This factor is not surprising since it is already known that in humid conditions, the oocyst is preserved for long periods of time<sup>19</sup>. On the other side, pregnant women living in Oslo had *T. gondii* infection incidence 5 times higher than those pregnant women living outside Oslo, a fact attributed to the greater proportion of foreign women living in the city. The highest prevalence rates (13.4%) were found in counties, where there is a mild climate and the close to the coastline and the lowest prevalence (6.7%) was found in the counties where there was a dry climate with cold winters and hot summers<sup>20</sup>. Similarly, a study in Chile found a progressive increase in the seroprevalence of toxoplasmosis at higher altitudes in comparison to the regions in the country with lower altitude; This phenomenon is probably related to geographic conditions and the type of meat consumption<sup>21</sup>.

#### Biological risk factors

**Pregnancy:** in Colombia's 1980 National Health Study, there was a higher seroprevalence of *T. gondii* in the subsample of pregnant women compared to the rest of the population<sup>13</sup>. Cellular immunity plays a major role in the resistance of the host to infection by *T. gondii*; A Th1 cytokine profile is necessary for protection and control of the infection. The production of progesterone during pregnancy and an increased expression in the HLAG molecule, which inhibits the induction of natural killer cells, are important factors in preventing fetal rejection by the mother and lead to a reduction of immune cellular functions; Therefore, in pregnant women, there is evidence of immunophysiological factors that would increase the susceptibility to *T. gondii* infection or other intracellular organisms<sup>22</sup>.

**Number of births:** There is evidence that women with children have a higher prevalence of *T. gondii* infection that increases proportionally to the increase in the number of pregnancies. In a study of risk factors in Brazil, a history of childbirth had an odds ratio (OR) of 14 (confidence interval [CI] 95% 2.8-68) after controlling for age<sup>23</sup>. In another study performed in Sweden, there was an increased risk of *T. gondii* as the number of births increased. This can be explained by the same reduction factor in the immune response derived from the increased expression of the HLAG molecule during pregnancy<sup>24</sup>.

**Genetic predisposition:** there is evidence of an association between human leukocyte antigen (HLA) and susceptibility to *T. gondii* infection. Among Caucasians, the frequency of DQ3 HLADQ gene alleles was significantly higher in infants with hydrocephalus infected with *Toxoplasma* (78%) than in infected infants without hydrocephalus (48%) or in normal controls. Although there is no significant association between HLA antigens, the total absence of HLA-B51 antigen in the mothers of patients with ocular toxoplasmosis was observed. The HLA characterization performed in these patients revealed an increase in the frequency of HLA-Bw62 antigen in patients with severe ocular impairment, indicating a possible relationship between the severity of ocular toxoplas-

mosis and an immunogenic factor. Recently, polymorphisms have been identified in the gene encoding an adenosine triphosphate (ATP) transporter protein, the ABCA4 subfamily A, and an increased probability of ocular and cerebral disease, likewise polymorphisms in the COL2A1 gene, which codifies collagen type II (predominant in ocular tissue), are associated with an increased probability of ocular involvement in children with Congenital toxoplasma infection.

**Immunodeficiency:** there is evidence of the relationship between the severity of infection by *T. gondii* and the immune status of the infected person. While toxoplasmosis in immunocompetent adolescents or adults is usually asymptomatic, in immunocompromised individuals it causes significant morbidity and mortality. Immunosuppression caused by acquired immunodeficiency syndrome, therapies for malignant diseases, transplants or lymphoproliferative disorders may result in the reactivation of a pre-existing latent toxoplasma infection, leading to broad clinical spectrum expressions, especially in the central nervous system (CNS), where it produces intracerebral lesions. Toxoplasmosis is a common opportunistic infection in patients with advanced human immunodeficiency virus (HIV); HIV positive pregnant women had higher rates of *T. gondii* positive titers (21.1%) compared to HIV seronegative women (13.1%). *T. gondii* infection can cause serious complications in pregnant women infected with HIV, giving rise to congenital defects, spontaneous abortion, fetal death, mental retardation, blindness, epilepsy, etc.<sup>26</sup>.

#### **Risk factors linked to lifestyle**

**Exposure to cats:** the risk of acquiring toxoplasmosis associated to cat contact varies from region to region. The transmission of cat secreted oocysts to humans depends on age, nutritional status and level of risk of acquiring the infection by the cat itself<sup>27</sup>. Among cats, seroprevalence is high, varying between 21 and 87% in Latin America<sup>28,29</sup>.

In Colombia, a study with 170 cats from Bogota and Armenia (Quindío) found an infection prevalence of 45%; However, there were large differences in seroprevalence among the 137 cats in Bogota (35%) compared to the 33 cats studied in Armenia (84%). In 15 animals in which *Toxoplasma* was isolated, 3 were classified as type I, 1 type II and 11, a combination of type I and type II<sup>10</sup>. Likewise, a seroepidemiological study performed in Bangladesh found a significant difference in the prevalence of antibodies against *T. gondii* between those with and without household cats. (24 vs. 11%, respectively,  $p = 0.01$ )<sup>30</sup>. A study in Illinois, USA, also reported an association between cats infected with *T. gondii* and an increased risk of human infections due to soil contact as a probable mechanism of transmission<sup>17</sup>. In contrast, the European multicentric study of risk factors did not find a strong association between having cat and *T. gondii* infection<sup>31</sup>. In fact, the association between cats and human toxoplasmosis is difficult to evaluate by epidemiological studies because the soil is the main reservoir of the infection, not cats. Although gardening activity was not associated with seropositivity, there was a non-sig-

nificant lower seroprevalence in gardeners who always wore gloves compared to those who did not use them.

Recently, a serological test that identifies antibodies by exposure to oocysts has been developed, which would help to identify if the infection was acquired by contact with cats or oocysts in water, and if results are negative for these oocyst proteins, undercooked meat could be considered the source of infection<sup>32</sup>.

**Contaminated food:** intake of cysts through infected meat is an important source of *T. gondii* infection in humans. In Colombia, it has been found that the risk for *Toxoplasma* infection with the intake of raw or half-cooked meat has a 13.2-fold higher risk<sup>33</sup>. In a multicentric European study, it was reported that undercooked meat accounted for between 30% and 63% of infections in different parts of the European continent. *T. gondii* has been detected in even 1 out of 67 ready-to-eat cured meat samples in the UK, suggesting that curing methods do not kill all tissue cysts.

The prevalence of cysts in the tissues of different kinds of animal meat varies considerably; The highest one was reported in sheep (23.9%) and porcine (12-15%), and the lowest in cattle (0-10%) and hen (0.3-8%). Pork has been the meat most commonly associated with the transmission of toxoplasmosis by food. In a 1994, in a study of 47 pig farms in Illinois, USA. 17% were contaminated with *Toxoplasma* oocysts. Antibodies against *T. gondii* were also detected in the serum of 6.9% of horses slaughtered for food in North America. In addition, a significant difference was found in the seroprevalence of *T. gondii* among poorly and adequately cooked meat recipients (19.5 and 9.6%, respectively).

In Colombia, a study of 180 meat samples for human consumption obtained in the 3 departments of the Eje Cafetero, 52.7% were positive for *T. gondii*.

Pork meat had the highest level of contamination (70%), with a higher prevalence in Manizales (80%), followed by beef in Armenia with 80%, and, finally, chicken meat in Pereira had the highest prevalence (70%) compared to chicken meat in other cities. There were no positive samples for chicken in Manizales<sup>34</sup>.

**Drinking raw water:** In pregnancy, drinking tap or unfiltered water increases the risk of infection, when compared to the consumption of bottled or filtered water. The first outbreak of toxoplasmosis affecting the largest number of people in the world was reported in 1955 and it was associated with the municipal water supply of a reservoir in the city of Victoria in the province of British Columbia, in Canada<sup>32</sup>. Of the 94 individuals associated with the outbreak of acute cases living in the capital district of the region, 83 (88%) lived in the area served by a water distribution system. The incidence rate of acute infection among persons residing in the area served by the reservoir was 3 times higher than areas served by other sources



(relative risk 3.53, 95% CI, 1.88-6.63), and acute *T. gondii* infection in 3,812 pregnant women was associated with consumption of unboiled municipal water consumption<sup>32</sup>. Drinking beverages made with unboiled water was an important risk factor for *T. gondii* infection in pregnant women in Armenia, Colombia<sup>33</sup>. Therefore, the consumption of unboiled water a risk factor for Toxoplasma infection, and the consumption of bottled or filtered water reduces the risk<sup>33</sup>. As in the case of *Giardia* or *Cryptosporidium*, chlorination is not sufficient to remove *Toxoplasma* in treated waters, and filtration is required to reduce transmission. A study done in France found that 1 in 6 samples of water had *Toxoplasma* deoxyribonucleic acid content, and there was a proposal for the detection of the messenger of ribonucleic acid in water using polymerase chain reaction (PCR) with reverse transcriptase assay to monitor drinkable water sources and to be able to prevent contamination from the parasite in the population<sup>35</sup>.

### What are the recommendations for primary prevention of *Toxoplasma* infection during pregnancy?

Primary prevention strategies such as health education arise as elements of vital importance to avoid *Toxoplasma* infection; Its success depends on the modification of habits and lifestyles that are permeated by strong cultural components.

### Summary and description of the body of evidence

A cohort study involving 27,827 pregnant women portrayed the experience in an obstetrics clinic during 1979-2001 in the prevention of *Toxoplasma* infection<sup>36</sup>. In phase 1 (1979-1982), no specific advice was given, while in phase 2 (1983-1990), women received a list of written instructions on primary prevention plus a full explanation by an attending physician. In the third phase (1991-2001), women received a leaflet with further explanation of congenital toxoplasmosis and a verbal repetition of recommendations during prenatal classes in the middle of the gestational period. There was a sustained decrease in seroconversion rates over the three periods, from 1.43, 0.53 to 0.09%. A reduction of 63% in the incidence of seroconversion between phase 1 and 2 and of 92% between the first and third phases was calculated. (Level of evidence 2-)

A study including several successive cross-sectional studies included 8,267 patients in 4 obstetrical rooms in Poland. During the 1991-1997 interval, researchers, using questionnaires administered by trained interviewers, measured the knowledge and serological status of 4,311 women, between 1991-1992. Later, between 1995-1996, knowledge during pregnancy and postpartum was evaluated in 1,246 women as well as the serological status, knowledge and behavior in 2,710 women in 1997. The prevalence of *Toxoplasma* antibodies dropped during the 1991 period -1992 to 1997, going from 58.9 to 44.0%. Knowledge considered as "good" increased from 24.3 to 45.3%. Among women analyzed after childbirth, the knowledge about prevention measures increased

from 45.5 to 80.3%. However, the lack of knowledge did not predict "unhealthy" behavior, and about half of the women who thought they had insufficient knowledge adopted correct behaviors. Among the 2,710 women surveyed in 1997, 60% had heard of toxoplasmosis on TV or women's magazines, compared with less than the 40% through radio, newspapers and providers of health services. (Level of Evidence 3). A controlled clinical study was conducted for 432 pregnant women from an urban and rural health agency in Ontario, Canada<sup>38</sup>. In some prenatal education classes, a 10-minute module based on the knowledge of toxoplasmosis, the effect of the disease on the fetus and the prevention strategies were randomly provided. Preventive measures focused on cat hygiene, food hygiene and personal hygiene. In the control group, toxoplasmosis was not specifically mentioned unless the patient was asked about the disease. Pre- and post-class questionnaires were conducted with respect to demographic information, knowledge, and specific behaviors. The sample was determined retrospectively among the women who completed both questionnaires. Of the 432 women who answered the previous questionnaire, only 285 (66%) answered the questionnaire after the classes. The response time varied between 5 weeks and 5 months. A scale was developed that scored in favor of preventive behaviors. At the end of the study, women in the intervention group had a better score than those in the control group regarding cat hygiene ( $p < 0.05$ ). There is also an improvement in the cooking behavior of more kinds of meat. The high loss of patients and the absence of an outcome based on *Toxoplasma* infection limits the usefulness of this study. (Level of Evidence 2+)

An unpublished ECC included 5,023 pregnant women part of a prenatal care clinics group in 7 departments in the Lyon, France area<sup>39</sup>. The effects of providing a 20-page booklet with 4 pages mainly aimed at modes of transmission and prevention measures coupled with an audio recording covering the most frequently asked questions during pregnancy, specially toxoplasmosis related questions were assessed. At the beginning of the study, no significant differences were found between the 2 arms of the study regarding levels of knowledge or behavior nor significant differences between the 2 groups in demographic or social aspects were found. In the 2 adjusted regression models, no significant association was found between group assignment and follow-up behaviors. Consumption of cooked beef "always" versus "less than always" was marginally associated with the study arm (OR 1.21,  $p$  0.08). Handwashing "always" after contact with soil, raw meat or unwashed vegetables also showed no association with intervention (OR 1.01, 95% CI 0.8-1.2). However, other variables such as baseline knowledge of the behaviors related to toxoplasmosis (OR 1.2, 95% CI 1.0-1.4), smoking (OR 1.3, 95% CI 1, 0-1.6) and alcohol consumption (OR 1.2, 95% CI 1.0-1.5) were associated with behavioral changes. Only 0.43% of the pregnant women presented seroconversion for toxoplasmosis: 13 / 2,591 (5 / 1,000) in the experimental group and 4 / 1,358 (3 / 1,000) in the control group ( $p = 0.35$ ). (Level of Evidence 1-).

## Interpretation and discussion of evidence

Evidence assessment on the effectiveness of education during pregnancy for the prevention of toxoplasmosis presents weaknesses, given the methodological problems found in the studies. Although the Canadian and French studies were clinical trials with randomized interventions and control groups, there are serious limitations on the conclusions due to the losses in the follow-up and the outcomes used. The highest quality study on educational strategies in France found no significant changes in risk behavior despite detailed and continuous information<sup>39</sup>. Only one study allows to provide information in brochures that include simple and precise measurements.

The GDG considered that toxoplasmosis prevention recommendations should include topics such as personal hygiene (hand washing), hygiene in food processing (cleaning of surfaces, proper washing of vegetables), in the preparation of meat and its adequate cooking, as well as the use of filtered or boiled water, per the risk factors identified for *Toxoplasma* infection. It should be emphasized that chlorination is insufficient for the elimination of oocysts.

## Clinical recommendation

**B** As part of prenatal control, it is advisable to make recommendations to the patients regarding: the consumption of well-cooked meats, consumption of safe water and hygienic food handling, hand washing after gardening, manipulation of animals (Cats), to prevent *Toxoplasma* infection

## What is the recommended follow-up for a seronegative pregnant woman? How should she be monitored?

The seronegative woman for *Toxoplasma* is the primary goal of pregnancy screening programs. These pregnant women are susceptible to infection, and are the ones who must have a serological follow-up to detect if the infection has been acquired. In Europe, there are programs that include monthly monitoring (France), quarterly (Austria) or no monitoring (Denmark), and it is necessary to establish if these programs are applicable to the Colombian context.

## Summary and description of the body of evidence

A systematic review of cohort studies of 1,438 mothers and children diagnosed during prenatal and neonatal screening programs evaluated the effect of treatment on vertical transmission and clinical manifestations of toxoplasmosis before the age of 1<sup>5</sup>. Analyses were adjusted per gestational age at the time of maternal seroconversion and other variables such as geographic latitude. A reduction in transmission was found related to the time elapsed between seroconversion

and initiation of treatment: If treatment was started within the first 3 weeks of seroconversion, the risk was estimated at OR 0.48 (95% CI 0.28 -0.80); Risk ratio increasing to 0.6 (95% CI 0.4-1.0) if treatment was started at week 4 or between week 5 and 8 (OR 0.6, 95% CI 0.36-1, 0). As for the effect on the reduction of symptoms in the child, the publication only included the results of the analysis were presented in 550 European live infected infants, not including the American cohorts, and no evidence was found that the prenatal treatment reduced the risk of Clinical manifestations (OR 1.11, 95% CI 0.61-2.02). The non-inclusion of the American cohorts was since in Colombia and Brazil, tomography was used for the diagnosis of brain lesions, while ultrasound was used in Europe. (Level of evidence 2 ++)

Analysis of the unpublished results of the Systematic Review on Congenital Toxoplasmosis included 691 children, including the American cohorts excluded in the previously presented analysis<sup>40</sup>. There was a decrease in the risk of congenital infection related to the time of initiation of treatment: the estimated risk for the presentation of clinical signs in the newborn with prenatal treatment was 0.4 (95% CI 0.25 -0.9) with spiramycin initiated 4 weeks after seroconversion; A risk of 0.6 (95% CI 0.4-0.99) if it was initiated after 4 weeks of seroconversion, was also considered. (Level of evidence 2 ++)

An ECC for 276 patients evidenced that most immunoglobulin M (IgM) tests by ELISA and ISAGA obtained sensitivities over 98% for the detection of seroconversions, in comparison to any other test<sup>41</sup>. (Level of evidence 1 b)

## Interpretation and discussion of evidence

The analysis and direct comparison of the results of the European screening programs were not able to conclude which is the best strategy, given the geographic heterogeneity for the risk of infection<sup>42</sup>. Clustered data from systematic reviews of observational cohorts across continents shows that the benefit of prenatal treatment to reduce transmission is only obtained if treated prior to seroconversion week 4; After this period of infection, there is uncertainty as to whether there is any benefit to the treatment. For this reason, seronegative follow-ups in seronegative with more than four weeks' intervals between tests would not allow cases to be detected early enough to obtain a significant treatment effect. Regarding the test of choice for such follow-up, the ELISA or SAGA test for anti-*Toxoplasma* IgM detection allows detection of infection 15 days after the infection is acquired and in this case, it is recommended as first line test. It is necessary to highlight that there must be a quality control of the tests to guarantee seroconversion detection.

## Clinical recommendation

**B** It is recommended to screen seronegative women monthly with an IgM test for *Toxoplasma*.

## Which are the *Toxoplasma* antibody tests that should be ordered first?

There are numerous tests for the diagnosis of toxoplasmosis during pregnancy; the common goal is to differentiate if the infection was acquired during pregnancy or before pregnancy. Antibodies detection as markers of recent infection can be performed with tests based on specific IgM detection methods such as immunofluorescence (IF), immunoassay, chemiluminescence, Western blot (WB) or immunoagglutination. Unlike what happens in other diseases, IgM, although a marker of acute disease, can remain positive for several months, making difficult the differentiation between acute and old infection. Strategies can also be used to distinguish a chronic infection from an acute infection by measuring the avidity of immunoglobulin G (IgG), the presence of specific antibody isotypes such as IgM, immunoglobulin A (IgA), immunoglobulin E (IgE), or Differential agglutination (AC / HS). Thus, it is necessary to make recommendations for practice that allows to select the most appropriate strategy for the detection of infection acquired during pregnancy. (Fig. 1)

## Summary and description of the body of evidence

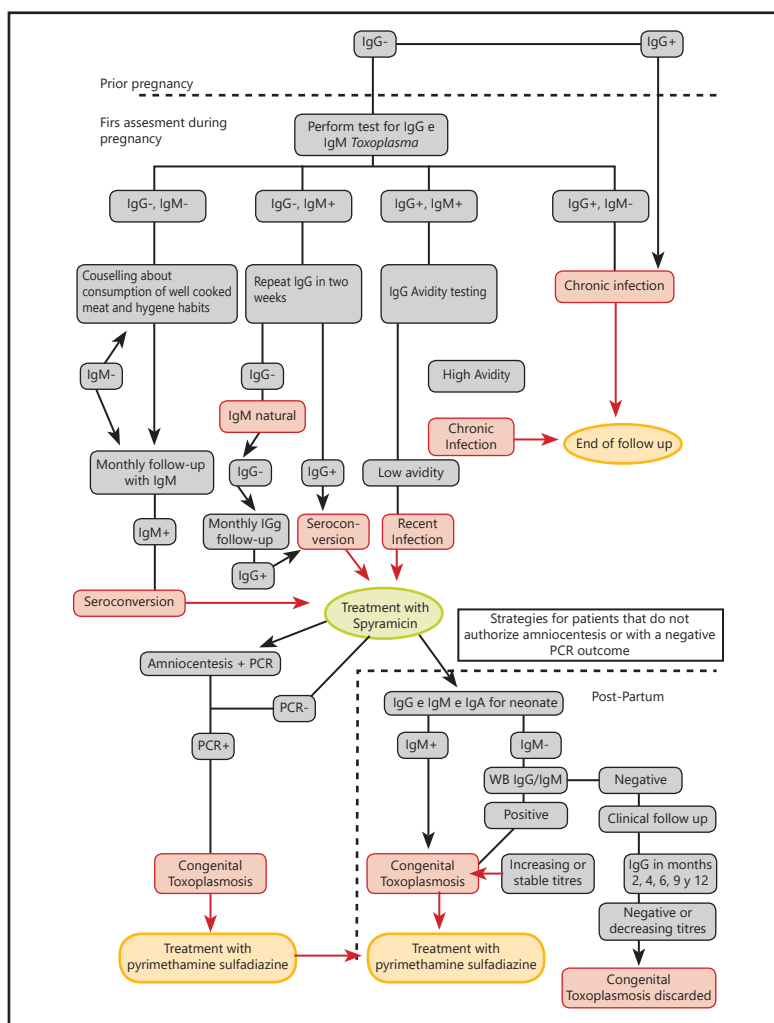
### Identification of chronic toxoplasmosis

A systematic review of 11 studies of diagnostic tests found that the sensitivity of IgG antibodies in pregnant women with a history of toxoplasmosis was extremely high. Of these studies, 6 that included 3096 patients included information that allowed to correctly identify the diagnosis and the characteristics of the population. The sensitivity of the tests for detecting IgG is greater than 95%, with a specificity greater than 94%<sup>43</sup>.

IgGs against *Toxoplasma* usually appear after the fourth week post infection, and persist for a lifetime. It is observed that its usefulness for the identification of an old infection can be greater before pregnancy or early in the gestation. It is considered that IgG negative women are susceptible to acute infection. (Level of Evidence 1a)

### Accuracy of the tests used for the diagnosis of acute toxoplasmosis in pregnant women

In a multicentric study<sup>41</sup>, 276 patients' serum (pregnant and non-pregnant women) in which acute toxoplasmosis, with less than 3 months' difference, 3 to 12 months' difference



IgG, IgM, IgA refers to specific immunoglobulins against *Toxoplasma gondii*. WB: Western Blot.  
Figure 1. Medical care flowchart for the diagnosis and treatment of toxoplasmosis during pregnancy.

and more than 12 months' difference was diagnosed. Diagnostic results were evaluated in a single serum sample with tests for specific anti-*Toxoplasma* IgM, IgA, IgG, and IgE antibodies and different combinations of anti-body assays. The reference test was a seroconversion of specific IgG or the Sabin-Feldman staining test. 195 combinations were assessed (IgM first line assays, IgM, IgA other AC / HS or IgG avidity second line). All ELISA, IgM and ISAGA assays except one showed > 98% sensitivities. The sensitivity of IgA was lower, with a significant variation (50-90%). IgE had a very low sensitivity (54%). The specificity of IgM and IgA to detect an infection acquired in the past was > 92%, except for 2 IgA ELISA assays. IgM and IgA tests were used to discriminate acute infection from convalescence with a specificity of 40%. No test combination of any kind could discriminate acute infections that occurred 3-12 months prior. Excellent diagnostic outcomes were achieved with the sequential use of highly sensitive IgM assays combined with methods that examined IgG avidity with specificities around 96%, while sensitivity was maintained around 96%, considering a period of recent infection < 16 weeks. IgA or IgE assays were less suitable than IgM for acute infection. (Level of evidence Ib)

### Interpretation and discussion of evidence

The selected studies coincide in showing that the choice test for diagnosis during pregnancy is a combination of tests (performed under the principle of ELISA, chemiluminescence or fluorometry or ISAGA) for IgM together with IgG tests in a first stage of diagnosis. Anti-*Toxoplasma* IgG and IgM anti-*Toxoplasma* negative IgG tests at the onset of gestation indicate a chronic (prior or former) infection and discard the risk of infection during pregnancy for the pregnant woman.

A negative IgG test with a positive IgM test requires a new sample to differentiate between seroconversion or natural IgM. These patients should have a second IgG test. A second positive IgG test is evidence of recent seroconversion. Patients with negative IgG (and, therefore, with natural IgM) should have monthly follow-up with IgG. The IgM test should not be repeated because this result is not expected to change.

A positive IgM test with positive IgM requires acute phase confirmation with avidity tests for anti-*Toxoplasma* IgG. This combination of tests must be performed before week 16, period in which the test combination performance is higher. The IgA ISAGA test can be recommended to support the diagnosis when the pregnant woman is tested after week 16 and a result of high avidity cannot rule out infections during the onset of gestation (**Note:** some persons do not develop IgA because possess a genetic deficiency to produce this immunoglobulin, for this reason an IgA negative test does not discard a recent toxoplasmosis). An IgG test against positive *Toxoplasma* before pregnancy or in a previous pregnancy precludes the possibility of infection during pregnancy in the mother.

### Clinical recommendation

- A. In cases where the infection status is unknown, it is recommended to perform IgG and IgM tests on pregnant woman during their first prenatal control to determine the presence of *Toxoplasma* infection.
- B. It is recommended that women with positive IgG and IgM be tested for avidity to confirm the antigenicity of the infection if the pregnancy is less than 16 weeks, and IgA if greater than 16 weeks.
- C. It is recommended that women with negative IgG and IgM be followed monthly following the criteria established by this guideline.
  - It is recommended that women with IgG negative and IgM positive repeat the test for IgG in 2 weeks to document acute seroconversion or presence of natural IgM.
  - It is recommended that a woman who considers becoming pregnant be tested for *Toxoplasma* IgG test to identify her prior infection status with the parasite.

### What are the recommended confirmatory tests for toxoplasmosis?

When seroconversion or results of recent *Toxoplasma* infection tests (low avidity IgG, IgM and IgA both positive) are found in pregnant women, it is necessary to know if the fetal infection is already present. This transmission varies per gestational age at the time of infection, and it is necessary to underline that there are asymptomatic infections that do not present echographic alterations. Until recently, experts advised amniocentesis to change the mother's treatment, from spiramycin to pyrimethamine- sulfadiazine. However, several observational studies have failed to demonstrate that treatment with pyrimethamine- sulfadiazine is better than only with spiramycin.

### Summary and description of the body of evidence

#### *Specific Immunoglobulin M in fetal blood or amniotic fluid* °

A cohort of evaluation of diagnostic tests with 134 pregnant women found that the IgM test obtained a sensitivity of 47% and a specificity of 95% for the detection of fetal infection, the lowest operational characteristics reported in the literature<sup>44</sup> (Level of Evidence Ib)

A study evaluating diagnostic tests that included 127 pregnant women found that the test sensitivity in amniotic fluid and fetal blood was 88.2% (15/17) and 87.5% (14/16), respectively. Specificities were estimated between 86.3 and 100% 44-46. (Level of evidence Ib)

Another study evaluating diagnostic tests that included 127 French women (1985-1993) who acquired the infection during pregnancy and received prenatal diagnosis found that the sensitivity of the tests for amniotic fluid and fetal blood was 88, 2% (15/17) and 87.5% (14/16), respectively. The specificities ranged from 86.3 to 100%. The results support the



discarding of cordocentesis with regards to amniocentesis (Level of Evidence II)

**Isolation of *Toxoplasma gondii* in fetal blood or amniotic fluid**  
A study evaluating diagnostic tests in 134 pregnant women found that the sensitivity of *T. gondii* isolation by inoculation in mice in the fetal blood ranged from 31 to 73%. (Level of evidence Ib)

A study of diagnostic tests with 280 serum in which *T. gondii* was isolated by means of inoculation of mice in the amniotic fluid, found that sensitivity was estimated in 52%<sup>47</sup>. (Level of Evidence Ib)

### PCR

A prospective multicentric study of diagnostic tests in 270 cases, 75 of them with confirmed infection, found that the sensitivity of CRP was 64%<sup>48</sup>. (Level of Evidence Ib).

In the diagnostic tests studies that included 593 cases, it was found that the sensitivity of the PCR oscillated between 69 and 71%, and the specificity was between 96 and 99%. The PCR sensitivity seemed to increase with the age of the seroconversion, but was not influenced by maternal treatment<sup>49</sup>(Level of Evidence Ib)

In a study evaluating diagnostic tests with 110 cases, it was estimated that the PCR sensitivity oscillated between 70% to 97%, while the specificity ranged from 93% to 100%. By combining the PCR diagnosis with *T. gondii* isolation in the amniotic fluid by mouse inoculation, the sensitivity increased to 91 and 94%, and the specificity to 97 and 99%<sup>47</sup>. (Level of Evidence II)

### Interpretation and discussion of evidence

The sensitivity of *Toxoplasma* deoxyribonucleic acid amplification tests by PCR in the amniotic fluid to determine fetal infection, ranges from 67 to 80% (conventional PCR), with specificities close to 100%. Cordocentesis is excluded because it is risky and offers low sensitivity for diagnosis. From a practical point of view, amniocentesis may be unnecessary in the third trimester, considering the high rates of transmission of the infection to the fetus (> 66%).

GDG does not recommend amniocentesis before week 18. Like any invasive procedure, performing an amniocentesis should be accompanied by an assessment of the balance between risks (preterm delivery, bleeding, etc.) and benefits. The decision of the woman should be recorded in the clinical history, and the signature of informed consent is recommended.

### Clinical recommendation

**B.** It is suggested to offer amniocentesis as an alternative the diagnosis of fetal infection through and PCR in the second trimester of gestation; The final decision must be agreed

and recorded in the clinical history. A negative result does not rule out congenital infection

**B.** The use of cordocentesis as a confirmatory test for toxoplasmosis infection **is not** recommended

- It is recommended to carry out rigorous quality controls in the centers that perform different diagnostic tests based on amniotic fluid for *Toxoplasma* infection.

### Is the use of ultrasound recommended to determine the severity of fetal involvement with positive tests for *Toxoplasma* infection?

Fetal infection by *Toxoplasma* may or may not be detected in an ultrasound. The detection of morphological alterations suggests the presence of brain lesions that could be compatible with *Toxoplasma* infection and severe CNS involvement.

### Summary and description of the body of evidence

A systematic review that included 7 studies with 25,036 women found that the quality of fetal anomaly detection with the use of ultrasound depends on the system of organs compromised, with higher detection rates for the CNS and not for skeletal and cardiac anomalies<sup>80</sup>. (Level of Evidence Ib)

A study of diagnostic tests that included 162 children with follow-up for 15 to 71 months found that 27 of them had confirmed congenital toxoplasmosis and no echographic lesions, and reported a normal neurological development during follow-up<sup>61</sup>. (Level of Evidence Ib)

A study of diagnostic tests with 286 cases<sup>52</sup> found that combined prenatal tests (serology, amniocentesis, echography) allowed the diagnosis of 77% of cases of congenital toxoplasmosis. (Level of Evidence II)

### Interpretation and discussion of evidence

Ultrasound monitoring allows the detection of CNS disorders. The absence of echographic alterations is correlated with a lower probability of post-natal neurological impairment. The absence of cerebral changes in the ultrasound does not discard an ocular involvement.

### Clinical recommendation

The follow up of the pregnant woman with fetal morphology ultrasound is recommended to define the severity and involvement of the fetus in the presence of positive tests for *Toxoplasma* infection.

It is recommended that follow-up ultrasound for these patients be performed by specialized staff trained in identifying fetal morphological alterations.

## What is the recommended secondary prevention scheme (prevention of fetal transmission) for women diagnosed with pregnancy acquired infection?

The purpose of infection detection programs during pregnancy is to detect and treat cases, as well as to reduce the transmission of infection and severe damage to the fetus and the newborn. For many years, spiramycin has been used as the first line treatment in the programs developed by the Government of France. However, its efficacy was questioned by a systematic review which did not allow to conclude as to whether there was any evidence of its benefit. The European Multicentre Study on Congenital Toxoplasmosis of the European Union encouraged several collaborative studies among several countries to collect evidence to determine whether prenatal treatment of toxoplasmosis was useful. Although the studies are observational, the outcomes have been consistent and allow for recommendations based on the best available evidence.

### Summary and description of the body of evidence

A systematic review included 22 European cohorts (550 infants) and 4 cohorts from other countries (141 children) to assess the effect of spiramycin and pyrimethamine-sulfadiazine on the risk of transmission to the child. Treatment with spiramycin (3 g / day until delivery) was found to be effective for prevention of transmission if it occurred within the first 3 weeks after seroconversion (OR 0.48, 95% CI 0, 2-0.8). There was a tendency to benefit from the treatment when performed between 3 and 5 weeks after seroconversion (OR 0.64, 95% CI 0.4-4.0). No beneficial effect was found if the treatment was administered between 5 to 8 weeks after seroconversion or after 8 weeks of seroconversion, an adjusted OR of 0.42 (95% CI 0.2-0.9) was estimated for risk of clinical symptoms in the child if prenatal treatment with spiramycin (3 g day until birth) was administered within the first 4 weeks after seroconversion, and an adjusted OR of 0.64 (95% CI 0.4-0.99) if it occurred after this time. In the European cohorts, this protective effect was less marked (OR 0.68, 95% CI 0.3-1.5 with treatments prior to 5 weeks of seroconversion, and OR 0.87, 95% CI 0, 4-1.8 after 5 weeks of seroconversion). With respect to drugs or protocols other than spiramycin, in Austria, for example, an initial protocol with pyrimethamine-sulfadiazine is used for the onset of treatment. No differences were found between protection with spiramycin or pyrimethamine sulphadiazine<sup>5</sup>. (Level of evidence 2 ++)

An observational study involving 293 patients evaluated prenatal versus spiramycin treatment in women with seroconversion or infants with congenital toxoplasmosis infection. Pyrimethamine vs. No treatment<sup>6</sup>. The therapy reduced severe neurological sequelae (OR 0.23, 95% CI 0.07-0.70), but no differences were observed between Spiramycin and Pyrimethamine-Sulfadiazine (OR 0.77, 95% CI 0.204-2.849). (Level of evidence 2 ++)

## Interpretation and discussion of evidence

In the identified evidence, there were no controlled clinical trials found on the efficacy of different therapeutic options for transmission of *Toxoplasma* infection to the fetus; However, observational studies are consistent in demonstrating a benefit of prenatal treatment with spiramycin, which has not been shown to be superior to the pyrimethamine-sulfadiazine regimen. Treatment should be initiated early after the diagnosis of acute toxoplasmosis, ideally, within 4 weeks of seroconversion. No studies were found to evaluate other antibiotics other than those analyzed in the systemic review for prenatal treatment of toxoplasmosis.

### Clinical recommendation

- B.** Pharmacological treatment with spiramycin (3 g / day for the rest of the pregnancy) is recommended for infection confirmed by *Toxoplasma* in the pregnant woman.
  - In the case of confirmation of fetal transmission of toxoplasmosis (PCR tests or ultrasounds suggesting neurological involvement), it is recommended to change to pyrimethamine plus sulfadiazine plus folinic acid

## What tests are recommended to establish the diagnosis of congenital infection in the newborn?

The newborn of a mother with infection during pregnancy requires a diagnostic evaluation to confirm or rule out congenital infection. As the infection, may be asynchronous and the clinical signs are nonspecific, serological tests should be used to differentiate between maternal or prophylactic antibodies. Likewise, the role of the detection tests of deoxyribonucleic acid of the parasite in the diagnosis of the newborn should be reviewed.

### Summary and description of the body of evidence

#### Serological tests immunoglobulin M

A study of diagnostic tests in 105 patients, estimated the specificity of IgM in cord blood sample to be 78%. The IgM ISAGA test had the highest sensitivity estimates, varying from 54 to 73%. Increased sensitivity was found with the IF sequence, ELISA and then ISAGA<sup>53</sup>. (Level of Evidence II)

A study of diagnostic tests with 126 cases found that the sensitivity of the IgM test in umbilical cord blood at birth oscillated between 28% with ELISA and 91% with SAGA. Beyond birth, a lower specificity of IgM was reported (96%). The lowest sensitivity was found in the IF tests, ranging from 10 to 27%<sup>54</sup>. (Level of Evidence II)

Two studies, one of diagnostic tests with 593 cases and another one of diagnostic tests with retrospective evaluation in 294 pregnant women, found a positive association between IgM sensitivity and the age of the mother in seroconversion. There was no association between the test results and the mother's treatment<sup>49,55</sup>. (Level of evidence Ib)

**Immunoglobulin A + immunoglobulin M serologic tests** A retrospective evaluation of diagnostic tests including 294 children of mothers with seroconversion found that IgM in umbilical cord blood was positive in 80% of cases when pregnant women were not treated, and 35% when receiving treatment ( $P = 0.01$ ), while cord IgA was positive in 78 and 61% cases, respectively ( $P = 0.45$ ) 47,53,55-57. (Level of evidence 1 b)

A study of diagnostic tests involving 14 laboratories of the European Community biomedical program evaluated immunological methods for the postnatal diagnosis of congenital toxoplasmosis. 55 newborns with persistent *anti-Toxoplasma* IgG and 50 infants without *anti-Toxoplasma* IgG in the first year of life were analyzed. The ISAGA test had a specificity below 90%, while the ELIFA test was 100%; The sensitivity for these 2 tests was 64.2 and 56.7%, respectively. When the results were combined for IgM and IgA with standardized methods and for IgG and IgM with comparative immunological profiles methods (CIP), the sensitivity increased but the specificity remained like the combination of IgA-IgM<sup>58</sup>. (Level of evidence 1 b).

A study of diagnostic tests in 894 patients comparing IgM and IgA found that both tests were more specific in neonatal blood (IgM: 98%; IgA: 100%) than umbilical cord results (IgM: 85%, IgA: 88 %). The sensitivity for IgM and IgA in neonatal blood was 61 and 60%, respectively) and in umbilical cord blood (67 and 54%, respectively). The combination of IgM and IgA resulted in an overall sensitivity increase of 73% and specificity of 98%<sup>47,53,55-57</sup>. (Level of evidence 1 b)

A study evaluating diagnostic tests comparing WB against serology in 175 children, 36 infected and 139 non-infected, estimated a sensitivity of 85% in the third month of life of this test. Likewise, when combined with serology, the sensitivity of WB increased to 94%, with specificity of 100% (95% CI 98.7-100) 47,53,55-57. (Level of Evidence 1b)

### Western blot

In a study evaluating diagnostic tests, 48 infants were included: 27 with confirmed diagnosis of congenital toxoplasmosis and 21 with suspicion and no manifestation of congenital infection. The relationship between immunoblot diagnosis and other methods was evaluated, finding that the sensitivity, specificity and positive predictive values in immunoblot for IgG were 92.6, 89.1, and 92.4%, respectively<sup>69</sup>. (Level of evidence 1 b)

A study of diagnostic tests in 3-month-old patients evaluated a cohort of 165 pregnant women in their relationship to prenatal care. The study found a sensitivity with WB of 85%<sup>60</sup>. (Level of Evidence 1b)

A study of screening diagnostic tests in Colombia with 200 patients evaluated the WB test for the diagnosis of congenital toxoplasmosis with a new criterion determined by band densitometry or immunodensitometry which diagnosed 91% of the cases compared to not using it with 72%. This method made

possible to compare if in the child's serum there were antibodies with a different specificity to those from mother so that it was possible to differentiate the antibodies passively transmitted by the mother and those produced by the child, eliminating the problem posed by IgG61 measurement. (Level of Evidence II)

### PCR

A diagnostic test study with 94 patients evaluated the role of PCR in placental tissue for the diagnosis of congenital toxoplasmosis, finding sensitivity of 61% and specificity of 92% 62. When the isolation of *T. gondii* in placental tissue was investigated by mouse inoculation and cell culture for cell culture, sensitivity was 30%, and specificity ranged from 98% to 100%. (Level of evidence 1 b)

### Interpretation and discussion of evidence

The use of the IgM + IgA combination for postnatal diagnosis was reported in 7 studies demonstrating consistent improvements in sensitivity across all studies. The sensitivity of the combination of IgA + IgM at birth varied from 55 to 89%. After birth, it varied from 63 to 94%. Although there is good evidence that the use of *anti-Toxoplasma* IgM and IgA tests have adequate sensitivity and specificity for the detection of congenital toxoplasmosis, the seronegativity of these tests does not rule out the diagnosis of congenital toxoplasmosis. GDG considered that both tests should be used simultaneously. In case of negative results in both tests, the WB test can increase sensitivity. Another way to identify patients with congenital toxoplasmosis is to monitor IgG titers. In uninfected children, maternal IgG titers should disappear between 6 and 10 months of age, indicating transplacental passage, while ascending titers are indicative of congenital infection.

### Clinical recommendation

- A.** The simultaneous measurement of IgG, IgM and IgA *anti-Toxoplasma* is recommended for diagnosis of congenital infection in the newborn.
- A.** When IgA and IgM *anti-Toxoplasma* are negative in serum, use of Western blot is recommended.
  - For IgG positive and negative results in the 3 tests (IgM, IgA and Western blot), the decision to defer postnatal treatment should be cautiously made after complete clinical, radiologic, and laboratory evaluation (head ultrasonography may be used). Monthly follow up of the newborn for 6 months is recommended, and then every 3 months up to the first year with IgG to discard congenital infection.

### What is the recommended medicine for newborns diagnosed with Congenital infection?

When a newborn has a confirmed diagnosis of congenital toxoplasmosis it requires specific treatment for one year. The aim of the treatment in symptomatic cases is to reduce ocular and neurological sequelae and mortality. In the asymptomatic

matic children, the aim is to prevent the appearance of retinoblastoma lesions or the development of hydrocephalus. According to studies of children without treatment (natural history of the disease), the risk varies per the geographical area. In European and North American series<sup>4</sup>, more than 82% of untreated children suffered from retinal damage in adolescence, and in children with neurological symptoms at birth, 85% had delayed psychomotor development, 81% seizures, 70% Motor impairment, 60% loss of vision, 33% hydrocephalus or microcephaly, and 14% hearing loss at 4 years of age. In some South American cohorts, eye injuries appear more rapidly, for example, in southern Brazil, in the first months of life, 80% of newborns already suffer from retinoblastoma lesions, 50% of which were active<sup>63</sup>.

### Summary and description of the body of evidence

A multicentric study included 120 children with congenital toxoplasmosis treated for one year with pyrimethamine sulfadiazine (pyrimethamine 2 mg / kg on the first day and then continued with 1 mg / kg / day [not to exceed 15 mg / day] until one year + sulfadiazine: 100 mg / kg / day distributed in 2 doses, until completing one year) and evaluated if there were differences in cognitive, neurological and ocular outcomes compared to 120 historical controls. It was found that most of the treated children had normal cognitive performance at the one year follow-up. 72% of children with major neurological impairment had normal cognitive scores and no auditory involvement<sup>4</sup>. (Level of Evidence 3)

In relation with the use of transfontanelar ultrasound in the first evaluation of the newborn to identify the presence of intracerebral calcifications, a study of diagnostic tests that included 44 patients, it was found that both methods (ultrasound and cerebral tomography) had very good diagnostic agreement ( $K > 0.8$ )<sup>64</sup>. (Level of evidence Ib)

### Interpretation and discussion of evidence

There is no evidence to support the recommendation based on randomized controlled trials. GDG together with the group of experts concluded that all symptomatic and asymptomatic children with paraclinical or clinical criteria compatible with toxoplasmosis, as well as all those with confirmation of fetal infection during pregnancy, regardless of if their mother received treatment, should be treated with a pyrimethamine sulfadiazine/ folic acid protocol for one year. Complete clinical, radiologic, and laboratory evaluation should be done at birth even for asymptomatic infants (head ultrasonography may be used). In asymptomatic children with negative IgM and IgA and western blot at first examinations, the decision to defer postnatal treatment should be cautiously made and follow-up should be performed to confirm or rule out *T. gondii* infection and proceed accordingly. Pyrimethamine is administered: 1 mg/ kg every 12 hours on the first 2 days, followed by 1 mg/kg per day for 1 year, and sulfadiazine at doses of 50 mg/kg every 12 h and folic acid (10 mg 3 times/

week) up to 1 week after suspension of pyrimethamine. Several studies have presented other combinations of pyrimethamine-sulfadoxine, besides the one included in the summary of the evidence<sup>65-68</sup>, thus:

- Pyrimethamine + sulfadoxine tablets (1 tablet = 500 mg sulfadoxine and 25 mg pyrimethamine). It is administered dissolved and based on the dose of sulfadoxine 25 mg/kg every 8 days. A loading dose of 50 mg/kg of sulfadoxine is administered on the first day, and then 25 mg/ kg in weekly single doses up to the first year of life along with 7.5 mg/ day (a half-tablet of 15 mg) of folic acid. There is a controversy over the use of this combination, given the risk of adverse effects and doubts about the therapeutic levels during administration at weekly intervals.
- Clindamycin 1 mg/kg /day orally plus clindamycin 30 mg/ kg/ day intramuscularly divided into 3 doses during the acute phase and then administered orally at 20 mg/kg/ day divided into 3 doses (clindamycin suspension 75 mg = 5 ml) as a maintenance dosage until the first year of life.

### Clinical recommendations

- All symptomatic and asymptomatic congenitally infected children should be treated for *Toxoplasma* infection with pyrimethamine plus sulfadiazine (1 mg kg / day once daily plus 100 mg / kg / day, twice daily for one year) plus Folic acid.
- In case of adverse effects and / or limitations to the first-choice treatment, and per physician's criteria clindamycin, sulfadoxine or azithromycin may be used as an alternative along with pyrimethamine and folic acid,

### Conflict of interests

The scientific research work, as well as the preparation of the recommendations included in this document, was carried out independently by GDG in the National University of Colombia. All the members of GDG, as well as the people who have participated both providing the expert collaboration and the external revision, made a disclosure a conflict of interests prior to their participation.

### Updating the guideline

The recommendations of this guide should be updated five years after it has been issued or before or in case of new evidence modifies the recommendations noted here in a significant manner.

### Acknowledgement of participating institutions

The Colombian Association of Infectology participated in the methodological construction, outlining and socialization of the guideline. The following institutions participated in the socialization meetings of the ICG for Pregnancy, Childbirth and Puerperium: Colombian Federation of Associations of Obstetrics and Gynecology, Colombian Society of Anesthe-



siology and Reanimation, Colombian Association of Faculties of Medicine, Colombian Association of Nursing Faculties, Colombian Association of Comprehensive Medicine Companies, National Academy of Medicine, Colombian Medical Association, Colombian Association of Hospitals and Clinics, National Institute of Health, CAFAM IPS, Imbanaco Medical Center, Clinica de Occidente, Women's Clinic, Clinica del Norte, Los Farallones Maternal and Child Clinic, Clinica del Rosario, Clinica del Prado, Cardioinfantil Foundation, LiLi Valley Foundation, Santa Fe Foundation of Bogota, Military Hospital, San Jose Hospital, Simon Bolivar Hospital, University of Health Sciences Foundation, Antioquia University, Quindio University, Libre University, Surcolombiana University


## Bibliography

- Gomez-Marín J. *Toxoplasma*. Capítulo 27. En: Díaz FJ, Estrada S, Franco L, Jaramillo JM, Maestre A, Ospina S, et al, eds. *Microbiología de las Infecciones Humanas*. Medellín: Corporación para las Investigaciones Biológicas; 2007. p. 384-99.
- McLeod R, Kieffer F, Sautter M, Hosten T, PeRoux H. Why prevent, diagnose and treat congenital toxoplasmosis? *Mem Inst Oswaldo Cruz*. 2009;104:320-44.
- Phan L, Kasza K, Jalbrzikowski J, Noble AG, Latkany P, Kuo A, et al; *Toxoplasmosis Study Group*. Longitudinal study of new eye lesions in treated congenital toxoplasmosis. *Ophthalmology*. 2008; 115: 553-559.e8.
- McLeod R, Boyer K, Karrison T, Kasza K, Swisher C, Roizen N, et al; *Toxoplasmosis Study Group*. Outcome of treatment for congenital toxoplasmosis, 1981-2004: the National Collaborative Chicago-Based, Congenital Toxoplasmosis Study. *Clin Infect Dis*. 2006;42:1383-94.
- SYROCOT (Systematic Review on Congenital Toxoplasmosis) study group, Thiebaut R, Leproust S, Chene G, Gilbert R. Effectiveness of prenatal treatment for congenital toxoplasmosis: a meta-analysis of individual patients' data. *Lancet*. 2007;369:115-22.
- Cortina-Borja M, Tan HK, Walton M, Paul M, Prusa A, Buffalano W, et al; *European Multicentre Study on Congenital Toxoplasmosis (EMSCOT)*. Prenatal treatment for serious neurological sequelae of congenital toxoplasmosis: an observational prospective cohort study. *PLoS Med*. 2010;7. pii: e1000351.
- Gilbert RE, Freeman K, Lago EG, Bahia-Oliveira LM, Tan HK, Walton M, et al; *European Multicentre Study on Congenital Toxoplasmosis (EMSCOT)*. Ocular sequelae of congenital toxoplasmosis in Brazil compared with Europe. *PLoS Negl Trop Dis*. 2008;2:e277.
- Gomez-Marín JE. *Toxoplasma* strain nomenclature. *J Infect Dis*. 2009;200:1012; respuesta del autor 1012-3.
- Gallego C, Saavedra-Matiz C, Gomez-Marín JE. Direct genotyping of animal and human isolates of *Toxoplasma gondii* from Colombia (South America). *Acta Trop*. 2006;97:161-7.
- Dubey JP, Su C, Cortes JA, Sundar N, Gomez-Marín JE, Polo U, et al. Prevalence of *Toxoplasma gondii* in cats from Colombia, South America and genetic characterization of T. gondii isolates. *Vet Parasitol*. 2006;141:42-7.
- Morisset S, Peyron F, Lobry JR, Garweg J, Ferrandiz J, Musset K, et al. Serotyping of *Toxoplasma gondii*: striking homogeneous pattern between symptomatic and asymptomatic infections within Europe and South America. *Microbes Infect*. 2008;10:742-7.
- Gomez-Marín JE, Montoya-de-Londolío MT, Castaño-Osorio JC. A maternal screening program for congenital toxoplasmosis in Quindío, Colombia and application of mathematical models to estimate incidences using age-stratified data. *Am J Trop Med Hyg*. 1997;57:180-6.
- Juliao CA, Moreno GS. Estudio Nacional de Salud: Toxoplasmosis en Colombia. Bogotá: Ministerio de Salud Bogotá: Imprenta Instituto Nacional de Salud; 1988.
- Gomez-Marín JE, De-la-Torre A, Angel-Muller E, Rubio J, Arenas J, Osorio E, et al. First Colombian multicentric newborn screening for congenital toxoplasmosis. *PLoS Negl Trop Dis*. 2011;5:e1195.
- Ministerio de la Protección Social-COLCIENCIAS-CEIS. Guía Metodológica para la elaboración de Guías de Atención Integral en el Sistema General de Seguridad Social en Salud Colombiano. Bogotá, Colombia: Ministerio de la Protección Social-COLCIENCIAS-CEIS; 2010. p. 393.
- Fan CK, Su KE, Chung WC, Tsai YJ, Chiou HY, Lin CF, et al. Seroepidemiology of *Toxoplasma gondii* infection among Atayal aborigines and local animals in Nan-ao district, Ilan county and Jen-ai district, Nan-tou county, Taiwan. *Kaohsiung J Med Sci*. 1998;14:762-9.
- Weigel RM, Dubey JP, Dyer D, Siegel AM. Risk factors for infection with *Toxoplasma gondii* for residents and workers on swine farms in Illinois. *Am J Trop Med Hyg*. 1999;60:793-8.
- Jeannel D, Niel G, Costagliola D, Danis M, Traore BM, Gentilini M. Epidemiology of toxoplasmosis among pregnant women in the Paris area. *Int J Epidemiol*. 1988;17:595-602.
- Afonso E, Thulliez P, Gilot-Fromont E. Local meteorological conditions, dynamics of seroconversion to *Toxoplasma gondii* in cats (*Felis catus*) and oocyst burden in a rural environment. *Epidemiol Infect*. 2010;138:1105-13.
- Jenum PA, Kapperud G, Stray-Pedersen B, Melby KK, Eskild A, Eng J. Prevalence of *Toxoplasma gondii* specific immunoglobulin G antibodies among pregnant women in Norway. *Epidemiol Infect*. 1998;120:87-92.
- Chatterton JM, Ho-Yen DO, eds. *Human toxoplasmosis*. Oxford: Oxford Medical Publications; 1992. p. 144-83.
- Robert-Gangneux F, Gangneux JP, Vu N, JaiHard S, Guiguen C, Amiot L. High level of soluble HLA-G in amniotic fluid is correlated with congenital transmission of *Toxoplasma gondii*. *Clin Immunol*. 2011;138:129-34.
- Gomez-Marín J. *Toxoplasma gondii*, Brazil. *Emerg Infect Dis*. 2007;13:512; respuesta del autor 512-3.
- Ljungstrom I, Otte E, Nokes J, Linder E, Forsgren M. Seroepidemiology of *Toxoplasma gondii* among pregnant women in different parts of Sweden. *Eur J Epidemiol*. 1995;11:149-56.
- Jamieson SE, De Roubaix LA, Cortina-Borja M, Tan HK, Mui EJ, Cordell HJ, et al. Genetic and epigenetic factors at COL2A1 and ABCA4 influence clinical outcome in congenital toxoplasmosis. *PLoS One*. 2008;3:e2285.
- Simpore J, Savadogo A, Ilboudo D, Nadambega MC, Esposito M, Yara J, et al. *Toxoplasma gondii*, HCV, and HBV seroprevalence and co-infection among HIV-positive and -negative pregnant women in Burkina Faso. *J Med Virol*. 2006;78:730-3.
- Elmore SA, Jones JL, Conrad PA, Patton S, Lindsay DS, Dubey JP. *Toxoplasma gondii*: epidemiology, feline clinical aspects, and prevention. *Trends Parasitol*. 2010;26:190-6.
- Alvarado-Esquível C, Liesenfeld O, Herrera-Flores RG, Ramirez-Sanchez BE, Gonzalez-Herrera A, Martinez-Garcia SA, et al. Seroprevalence of *Toxoplasma gondii* antibodies in cats from Durango City, Mexico. *J Parasitol*. 2007;93:1214-6.
- Cavalcante GT, Aguiar DM, Chiebao D, Dubey JP, Ruiz VL, Dias RA, et al. Seroprevalence of *Toxoplasma gondii* antibodies in cats and pigs from rural Western Amazon, Brazil. *J Parasitol*. 2006;92:863-4.
- Samad MA, Dey BC, Chowdhury NS, Akhtar S, Khan MR. Seroepidemiological studies on *Toxoplasma gondii* infection in man and animals in Bangladesh. *Southeast Asian J Trop Med Public Health*. 1997;28:339-43.
- Cook AJ, Gilbert RE, Buffalano W, Zufferey J, Petersen E, Jenum PA, et al. Sources of toxoplasma infection in pregnant women: European multicentre case-control study. *European Research Network on Congenital Toxoplasmosis*. *BMJ*. 2000;321:142-7.
- Boyer K, Hill D, Mui E, Wroblewski K, Karrison T, Dubey JP, et al; *Toxoplasmosis Study Group*. Unrecognized ingestion of *Toxoplasma gondii* oocysts leads to congenital toxoplasmosis and causes epidemics in North America. *Clin Infect Dis*. 2011;53:1081-9.
- Lopez-Castillo CA, Diaz-Ramirez J, Gomez-Marín JE. Risk factors for *Toxoplasma gondii* infection in pregnant women in Armenia, Colombia. *Rev Salud Publica (Bogotá)*. 2005;7:180-90. Publicación electrónica 10 Sept 2005. Factores de riesgo en mujeres embarazadas, infectadas por *Toxoplasma gondii* en Armenia- Colombia.
- Lora F AH, Perez JE, Arias LE, Idarraga SE, Mier D, Gomez Marin JE. Detección de *Toxoplasma gondii* en carnes de consumo humano por la técnica de Reacción en Cadena de la Polimerasa (PCR) en tres ciudades del eje cafetero. *Infectio*. 2007;11:117-23.
- Villena I, Aubert D, Gomis P, Ferte H, Ingland JC, Denis-Bisiaux H, et al. Evaluation of a strategy for *Toxoplasma gondii* oocyst detection in water. *Appl Environ Microbiol*. 2004;70:4035-9.
- Brugelmans M, Naessens A, Foulon W. Prevention of toxoplasmosis during pregnancy - An epidemiologic survey over 22 consecutive years. *J Perinat Med*. 2004;32:211-4.
- Pawlowski ZS, Gromadec-Sutkiewicz M, Skommer J, Paul M, Rokossowski H, Suchocka E, et al. Impact of health education on knowledge and prevention behavior for congenital toxoplasmosis: the experience in Poznań, Poland. *Health Educ Res*. 2001;16:493502.
- Carter AO, Gelmon SB, Wells GA, Toepell AP. The effectiveness of a prenatal education programme for the prevention of congenital toxoplasmosis. *Epidemiol Infect*. 1989;103:539-45.



39. Nguyen Hoang Hanh D. Evolution des connaissances et des comportements au cours d'un programme d'éducation prénatale pour la prévention primaire de la toxoplasmose congénitale chez les femmes enceintes séronégatives pour la toxoplasmose. Région de Lyon, 1994-95. Burdeos: Université Victor Segalen Bordeaux; 2004;2:62.
40. Thiebaut R, Bricout H, Di Costanzo S, Mouillet E, Eurotox panel 2 experts. Systematic review of published studies evaluating postnatal treatment effect [Unpublished report]. Bordeaux (France): The Eurotox Group; 2005. Disponible en: [http://eurotox.isped.ubordeaux2.fr/WWW\\_PUBLIC/DOC/PostnatalEffect\\_v25082005.pdf](http://eurotox.isped.ubordeaux2.fr/WWW_PUBLIC/DOC/PostnatalEffect_v25082005.pdf). Consultado en Enero 7 de 2013.
41. Roberts A, Hedman K, Luyasu V, Zufferey J, Bessieres MH, Blatz RM, et al. Multicenter evaluation of strategies for serodiagnosis of primary infection with *Toxoplasma gondii*. Eur J Clin Microbiol Infect Dis. 2001;20:467-74.
42. Gilbert R, Dunn D, Walton M, Hayde M, Prusa A, Lebech M, et al. Ecological comparison of the risks of mother-to-child transmission and clinical manifestations of congenital toxoplasmosis according to prenatal treatment protocol. Epidemiol Infect. 2001;127:113-20.
43. Nieto AJ. Evaluación basada en la evidencia de la medición de anticuerpos IgG en la toxoplasmosis materna. Rev U Quindio. 2004;10:23-32.
44. Foulon W, Pinon JM, Stray-Pedersen B, Pollak A, Lappalainen M, Decoster A, et al. Prenatal diagnosis of congenital toxoplasmosis: a multicenter evaluation of different diagnostic parameters. Am J Obstet Gynecol. 1999;181:843-7.
45. Dupouy-Camet J, Bougnoux ME, Lavareda de Souza S, Thulliez P, Dommergues M, Mandelbrot L, et al. Comparative value of polymerase chain reaction and conventional biological tests for the prenatal diagnosis of congenital toxoplasmosis. Ann Biol Clin (Paris). 1992;50:315-9.
46. Fricker-Hidalgo H, Pelloux H, Muet F, Racinet C, Bost M, Goullier-Fleuret A, et al. Prenatal diagnosis of congenital toxoplasmosis: comparative value of fetal blood and amniotic fluid using serological techniques and cultures. Prenat Diagn. 1997;17:831-5.
47. Robert-Gagneux F, Gavinet MF, Ancelle T, Raymond J, TourteSchaefer C, Dupouy-Camet J. Value of prenatal diagnosis and early postnatal diagnosis of congenital toxoplasmosis: retrospective study of 110 cases. J Clin Microbiol. 1999;37:2893-8.
48. Romand S, Walton M, Franck J, Thulliez P, Peyron F, Dumon H. Prenatal diagnosis using polymerase chain reaction on amniotic fluid for congenital toxoplasmosis. Obstet Gynecol. 2001;97:296300.
49. Thalib L, Gras L, Romand S, Prusa A, Bessieres MH, Petersen E, et al. Prediction of congenital toxoplasmosis by polymerase chain reaction analysis of amniotic fluid. BJOG. 2005;112:567-74.
50. Bricker L, Garcia J, Henderson J, Mugford M, Nielson J, Roberts T, et al. Ultrasound screening in pregnancy: a systematic review of clinical effectiveness, cost-effectiveness and women's views. Health Technol Assess. 2000;4:i-vi, 1-193.
51. Berrebi A, Kobuch WE, Bessieres MH, Bloom MC, Rolland M, Sarraon MF, et al. Termination of pregnancy for maternal toxoplasmosis. Lancet. 1994;344:36-9.
52. Pratlong F, Boulot P, Villena I, Issert E, Tamby I, Cazenave J, et al. Antenatal diagnosis of congenital toxoplasmosis: evaluation of the biological parameters in a cohort of 286 patients. Br J Obstet Gynaecol. 1996;103:552-7.
53. Pinon JM, Dumon H, Chemla C, Franck J, Petersen E, Lebech M, et al. Strategy for diagnosis of congenital toxoplasmosis: evaluation of methods comparing mothers and newborns and standard methods for postnatal detection of immunoglobulin G, M, and A antibodies. J Clin Microbiol. 2001;39:2267-71.
54. Tissot Dupont D, Fricker-Hidalgo H, Brenier-Pinchart MP, Bost-Bru C, Ambroise-Thomas P, Pelloux H. Usefulness of Western blot in serological follow-up of newborns suspected of congenital toxoplasmosis. Eur J Clin Microbiol Infect Dis. 2003;22:122-5.
55. Naessens A, Jenun PA, Pollak A, Decoster A, Lappalainen M, Villena I, et al. Diagnosis of congenital toxoplasmosis in the neonatal period: A multicenter evaluation. J Pediatr. 1999;135:714-9.
56. Walton M, Dunn D, Slimani D, Girault V, Gay-Andrieu F, Peyron F. Diagnosis of congenital toxoplasmosis at birth: what is the value of testing for IgM and IgA? Eur J Pediatr. 1999;158:645-9.
57. Rifling V, Dietz K, Krczal D, Knotek F, Enders G. Evaluation of a commercial IgG/IgM Western blot assay for early postnatal diagnosis of congenital toxoplasmosis. Eur J Clin Microbiol Infect Dis. 2003;22: 174-80.
58. Pinon JM, Chemla C, Villena I, Foudrinier F, Aubert D, Puygauthier-Toubas D, et al. Early neonatal diagnosis of congenital toxoplasmosis: value of comparative enzyme-linked immunofiltration assay immunological profiles and *anti-Toxoplasma gondii* immunoglobulin M (IgM) or IgA immunocapture and implications for postnatal therapeutic strategies. J Clin Microbiol. 1996;34:579-83.
59. Chumpitazi BF, Boussaid A, Pelloux H, Racinet C, Bost M, Goullier-Fleuret A. Diagnosis of congenital toxoplasmosis by immunoblotting and relationship with other methods. J Clin Microbiol. 1995;33: 1479-85.
60. Bessieres MH, Berrebi A, Rolland M, Bloom MC, Rogues C, Cassaing S, et al. Neonatal screening for congenital toxoplasmosis in a cohort of 165 women infected during pregnancy and influence of in utero treatment on the results of neonatal tests. Eur J Obstet Gynecol Reprod Biol. 2001;94:37-45.
61. Gallego-Marin C, Henao AC, Gomez-Marin JE. Clinical validation of a western blot assay for congenital toxoplasmosis and newborn screening in a hospital in Armenia (Quindio) Colombia. J Trop Pediatr. 2006;52: 107-12.
62. Fricker-Hidalgo H, Brenier-Pinchart MP, Schaal JP, Equy V, Bost-Bru C, Pelloux H. Value of *Toxoplasma gondii* detection in one hundred thirty-three placentas for the diagnosis of congenital toxoplasmosis. Pediatr Infect Dis J. 2007;26:845-6.
63. Vasconcelos-Santos DV, Machado Azevedo DO, Campos WR, Orefice F, Queiroz-Andrade GM, Carellos EV, et al; UFMG Congenital Toxoplasmosis Brazilian Group. Congenital toxoplasmosis in south-eastern Brazil: results of early ophthalmologic examination of a large cohort of neonates. Ophthalmology. 2009; 116:2199-205.e1.
64. Logo EG, Baldisseri M, Hoeffel Filo JR, Santiago D, Jungle R. Agreement between ultrasonography and computed tomography in detecting intracranial calcifications in congenital toxoplasmosis. Clan Radial. 2007; 62:1004-11.
65. Fauchard B, Garcia-Merci P, Franck J, Moodier P, Francois P, Gannet S, et al. Long-term ocular outcome in congenital toxoplasmosis: a prospective cohort of treated children. J Infect. 2012; 64:104-9.
66. Barresi A, Acauline C, Besieres MH, Lathi ere M, Cassian S, Manville V, et al. Long-term outcome of children with congenital toxoplasmosis. Am J Oster Gynecol. 2010; 203:552. e1-6.
67. Courvoisier S, Charita B, Mousier C, Walton M, Debaucher G, Al Kurd M, et al. Population pharmacokinetics of pyrimethamine and sulfadoxine in children treated for congenital toxoplasmosis. Antimicrobe Agents Chemother. 2004; 48:3794-800.
68. Trenque T, Simón N, Villena I, Chema C, Quereos C, Xerox B, et al. Population pharmacokinetics of pyrimethamine and sulfadoxine in children with congenital toxoplasmosis. Br J Clin Pharmacol. 2004; 57:735-41.

**Annex 1. Levels of Evidence and Grades of Recommendation**

Questions about interventions	
1++	High quality meta-analyses, systematic reviews of clinical trials or high-quality clinical trials with very little risk of bias.
1+	Well-conducted meta-analyses, systematic reviews of clinical trials or well-conducted clinical trials with low risk of bias.
1-	Metanalysis, systematic reviews of clinical trials or clinical trials with high risk of bias.
2++	Cohort studies or well-conducted cases and controls with low risk of bias and with a high probability of establishing a causal relationship.
2+	Studies of cohorts or cases and controls with high risk of bias and significant risk that the relationship is not causal.
2-	Studies of cohorts or cases and controls with high risk of bias and significant risk that the relationship is not causal.
3	Non-analytical studies, such as case reports and case series.
4	Expert opinion.
Levels of recommendations	
A	At least one meta-analysis, systematic review or clinical trial classified as 1+ and directly applicable to the target population of the guide, or a volume of scientific evidence composed of studies classified as 1+ and with great consistency between them.
B	A volume of scientific evidence composed of studies classified as 2++, directly applicable to the target population of the guide and showing great consistency between them, or scientific evidence extrapolated from studies classified as 1+ or 1+.
C	A volume of scientific evidence composed of studies classified as 2+ directly applicable to the target population of the guide and showing great consistency between them, or scientific evidence extrapolated from studies classified as 2++.
D	Scientific evidence of level 3 or 4; Or extrapolated scientific evidence from studies classified as 2+. Studies classified as 1- and 2- should not be used in the process of making recommendations because of their high potential for bias.
	Recommended practice, based on clinical experience and the consensus of the developer group.

**Questions about diagnosis**
**Adaptation of the National Institute for Health and Clinical Excellence of Evidence Levels of the Oxford Center for Evidence Based Medicine and the Center for Reviews and Dissemination**

Ia	Systematic review with homogeneity of Level 1 studies
Ib	Level 1 studies
II	Level 2 studies. Systematic review of level 2 studies
III	Level 3 studies. Systematic review of level 3 studies
IV	Consensus, experts opinion without explicit critical assessment
Level 1 studies	Fulfill: <ul style="list-style-type: none"> <li>Masked comparison with valid reference sample (gold pattern).</li> <li>Adequate spectrum of patients</li> </ul>
Level 2 studies	They present only one of the following biases: <ul style="list-style-type: none"> <li>Non-representative population (the sample does not reflect the population where the test will be applied).</li> <li>Comparison with the reference pattern (gold standard) is inadequate (the test to be evaluated is part of the gold standard or the result of the test influences the gold standard).</li> <li>Unmasked comparison.</li> <li>Case-control studies.</li> </ul>
Level 3 studies	Present 2 or more of the criteria described in Level 2 studies.
Degrees of recommendation	
A	Ia or Ib
B	II
C	III
D	IV